

using a lighter shade than the body acrylic. The provisional restoration will serve as the guide for the technician to place the incisal edges in the precise position as dictated by the "smile line" and the lip closure path. It also will enable them to construct the anterior guide table for a proper envelope of function.

Before-and-after photos demonstrate the dramatic esthetic impact provisional

restorations provide. (Figures 12 and 13) The quality provisional truly can be one of the best marketing aspects for your practice. If you take the time to make and provide the highest quality provisionals consistently, patients will deeply appreciate the effort involved. The "paycheck" comes when they show their appreciation by referring their family and friends to your dental office.

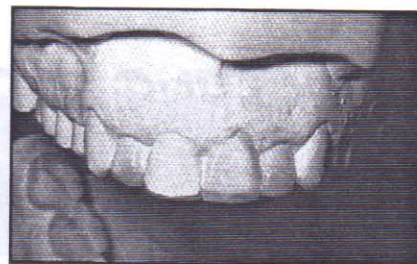


Figure 1

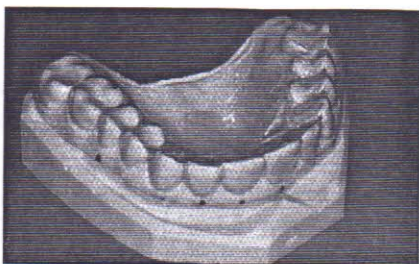


Figure 2



Figure 3



Figure 4



Figure 5

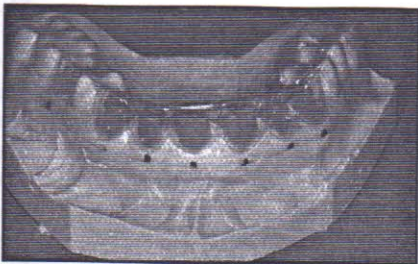


Figure 6

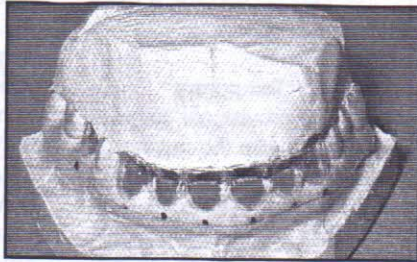


Figure 7



Figure 8



Figure 9



Figure 10



Figure 11

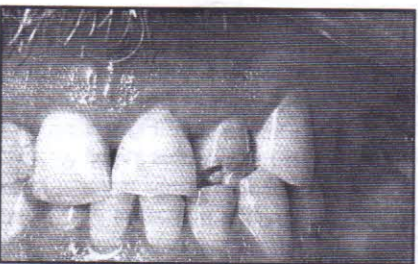


Figure 12

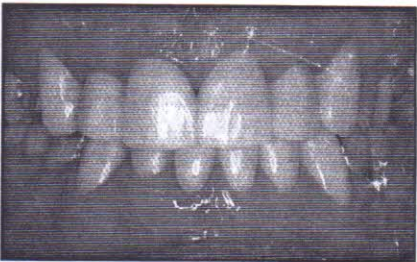


Figure 13

About the Author

Dr. Pete Roach has been in private practice in St. Petersburg, FL, for 26 years. He has been a partner in one of the most renowned practices in the country, Dawson, Roach, DuPont & Wilkerson. He is a faculty member at the L.D. Pankey Institute, and is one of the most sought after speakers in this country. In 1980, with Dr. Peter Dawson, he was a founder of the Center for Advanced Dental Study in St. Petersburg, and is an active member of the American Academy of Restorative Dentistry and the American Academy of Esthetic Dentistry. Dr. Roach may be reached at (813) 821-4433. For information on seminars at the Center for Advanced Dental Study, write 111 2nd Ave, NE, St. Petersburg, FL 33701, or Fax (813) 822-7252.

